



TIME CAPSULE





Before

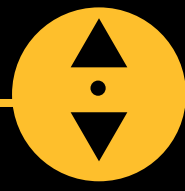


After

A consistent force behind APHRC's growth and strategic direction is the generations of men and women who have served and continue to be on the Center's Board.

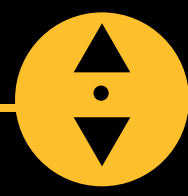


Before



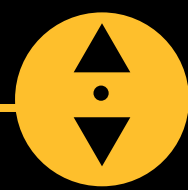
After

What began in 2020 as a small team has grown into a thriving regional base: APHRC's West Africa Regional Office currently has over 35 staff working across a diverse portfolio of projects.



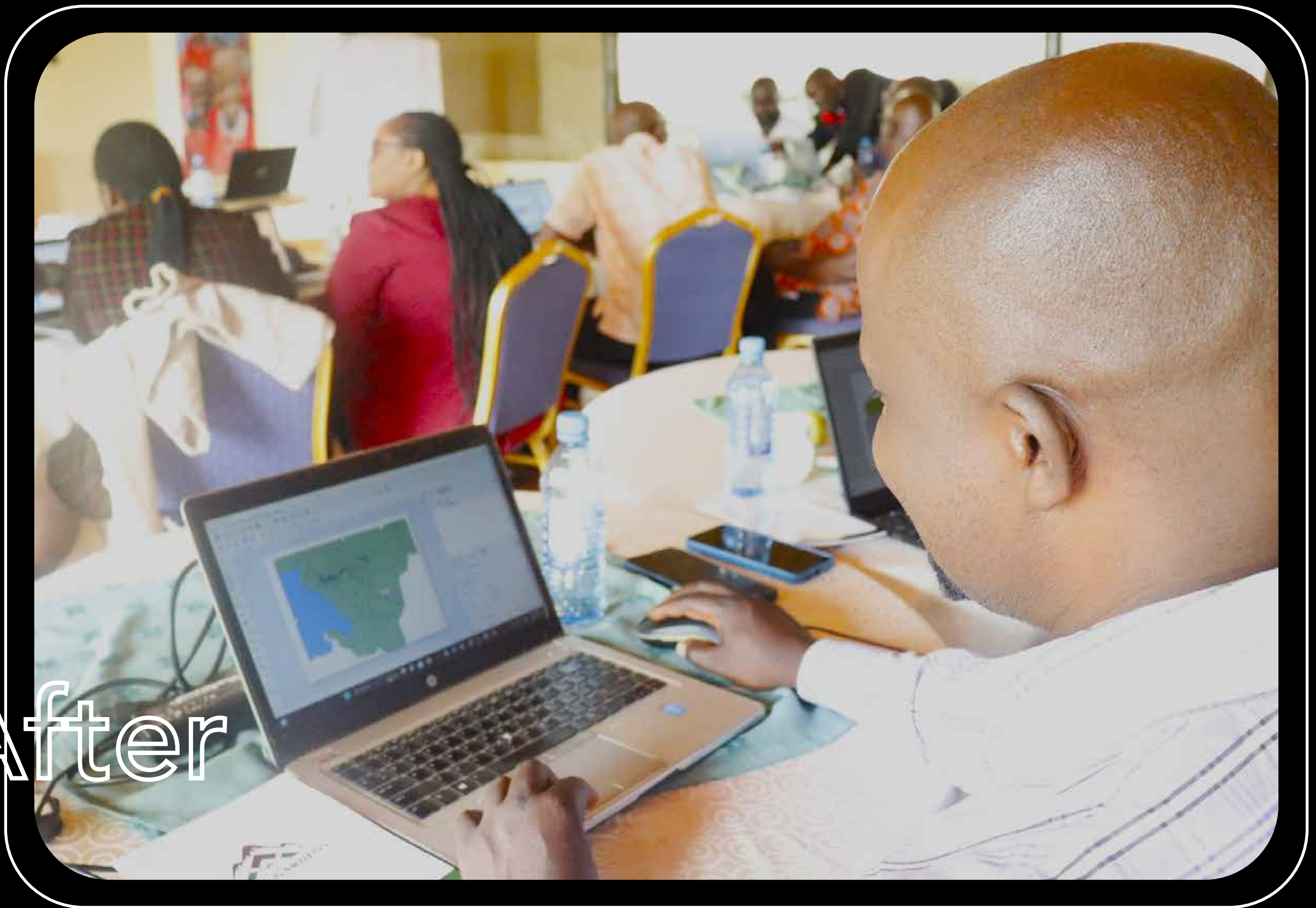
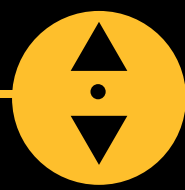
APHRC's branded exhibition stands have transformed into strategic engagement spaces, enabling knowledge exchange, stakeholder interaction, and evidence-informed conversations.





Over the years, APHRC has continued to fill rooms with purpose and people to foster ideas. The Center has created a dynamic environment for collaboration and evidence-informed dialogue.





Over the years, APHRC has shifted from paper-based mapping to digital tools that provide real-time updates, enhanced searchability, and advanced spatial analysis for data collection.

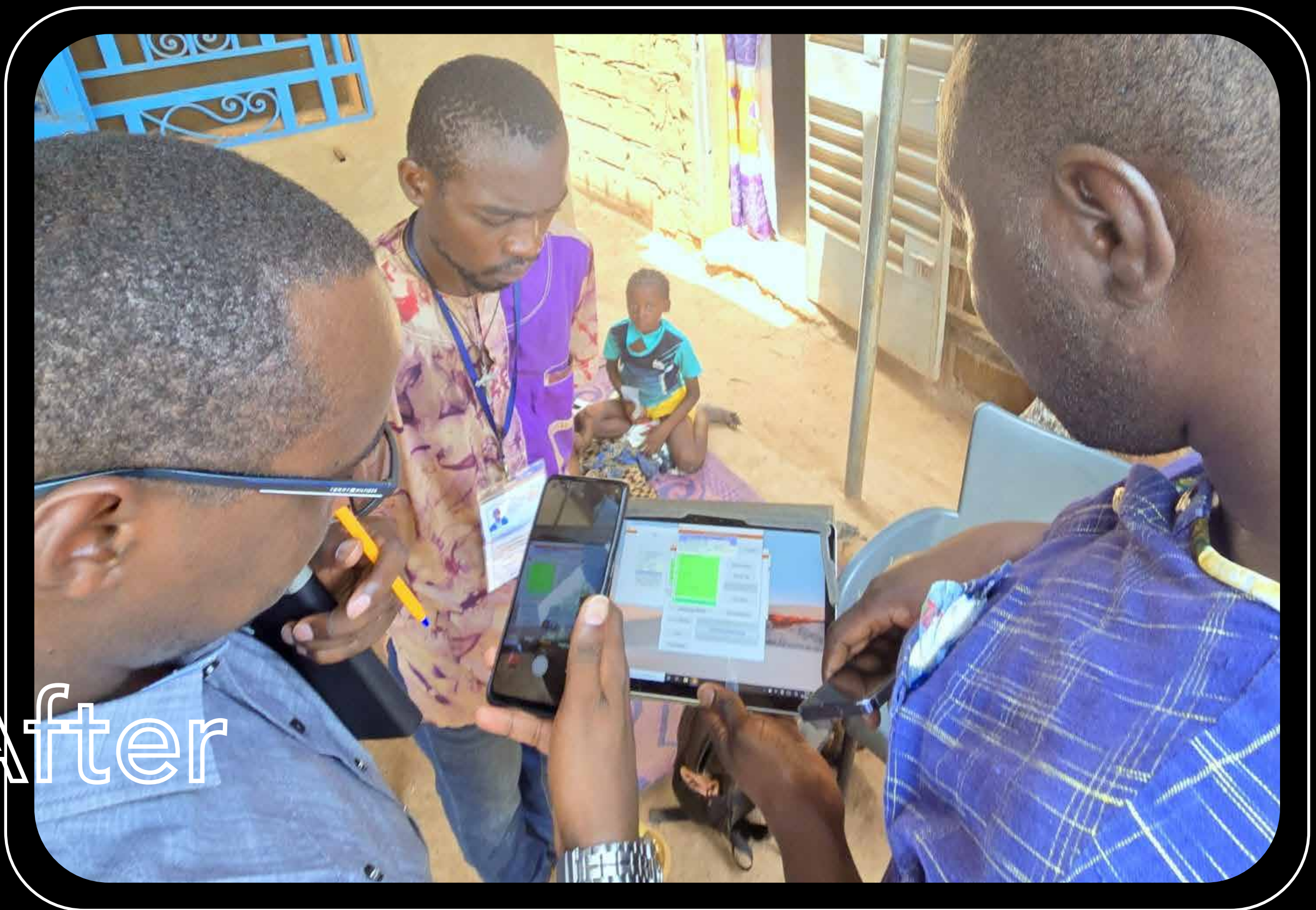


From disseminating findings and knowledge on flip charts to adopting digital methods such as projectors, APHRC has embraced technology and digital innovation.





Before



After

Data collection was paper-based, and now, APHRC uses innovative digital systems that enhance efficiency, reduce data loss, and improve the quality and precision of evidence.

APHRC RETREAT HELD AT NAROMORU RIVER LODGE
FROM 21ST - 24TH MAY 2003



Before

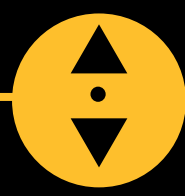
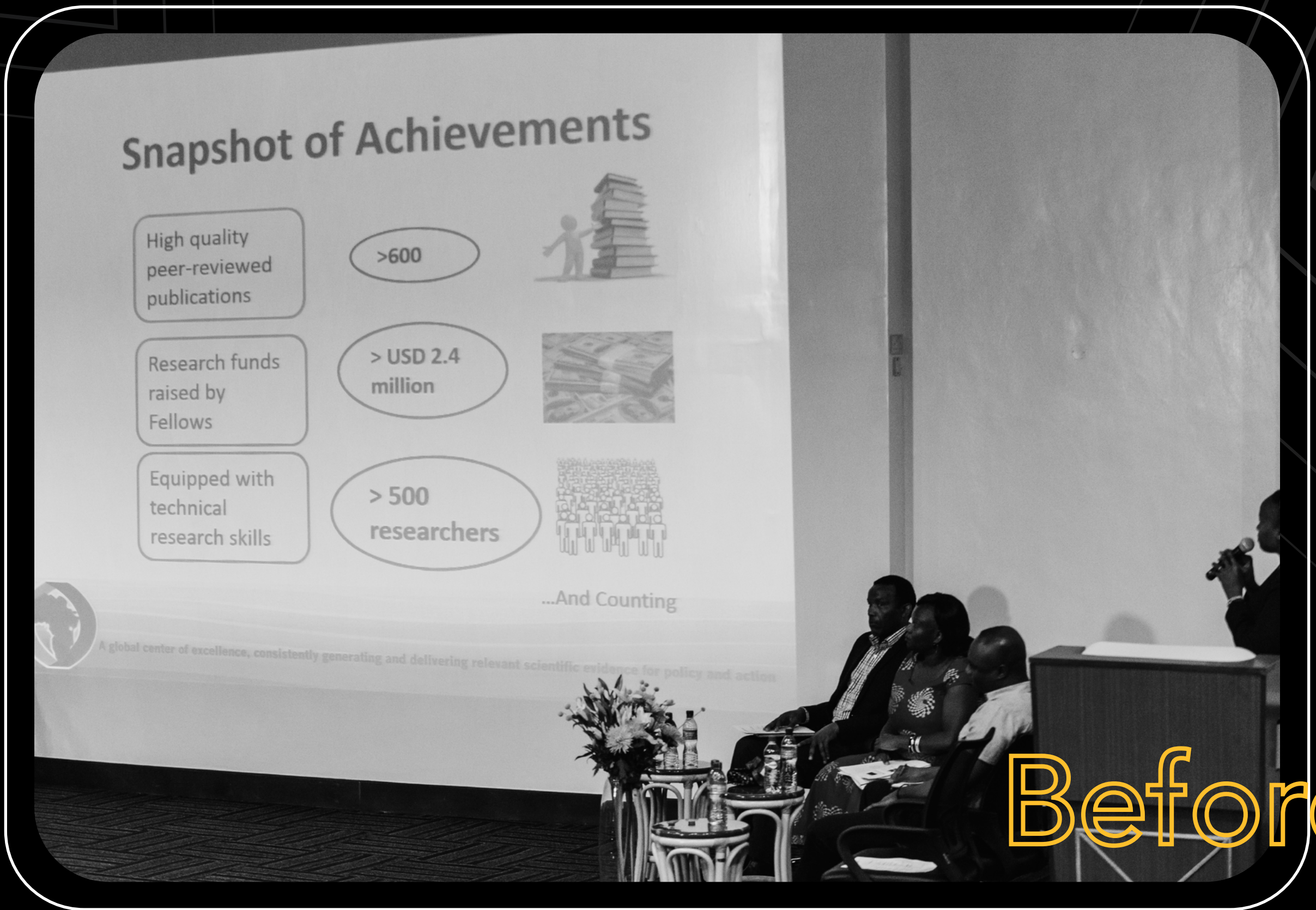


After

APHRC's most important investment is its people. From a team of 17 to currently over 300 staff! They are the key to achieving the organization's goals.



From an empty space to a knowledge hub! APHRC's ULWAZI I and II are designed to foster learning, knowledge exchange, ideation, collaboration, and innovation.



The Center's achievements, programs, and priorities have evolved, going beyond research to capacity strengthening and policy action. A filled-up organogram supports this growth.

