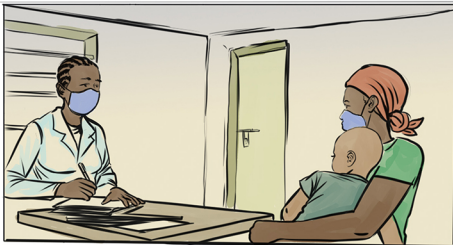
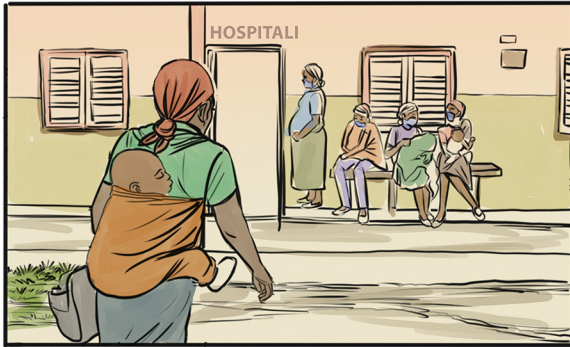
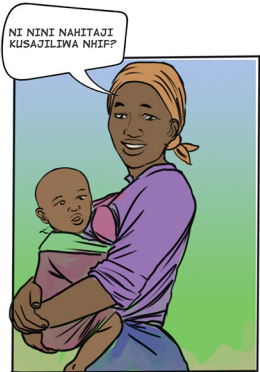
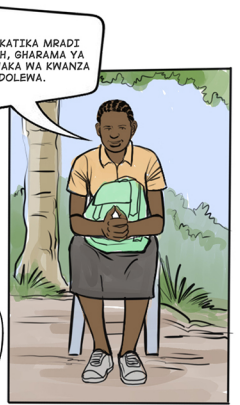
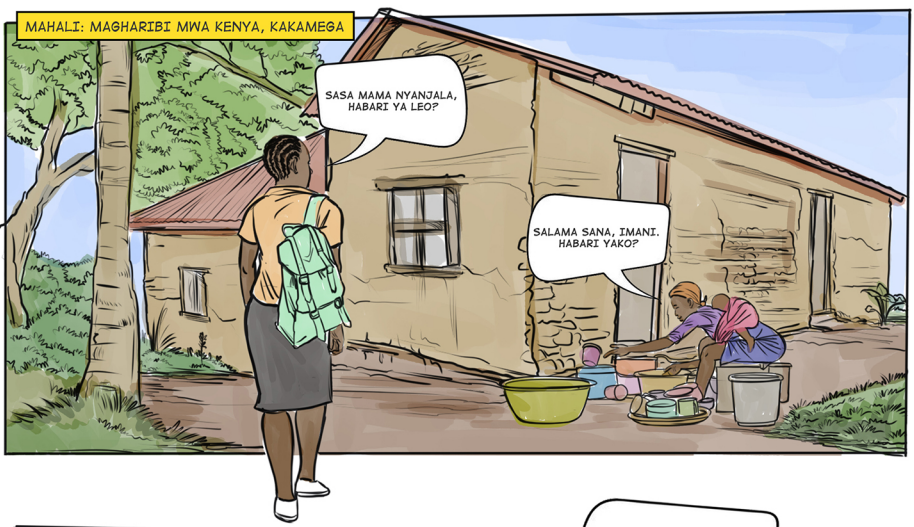


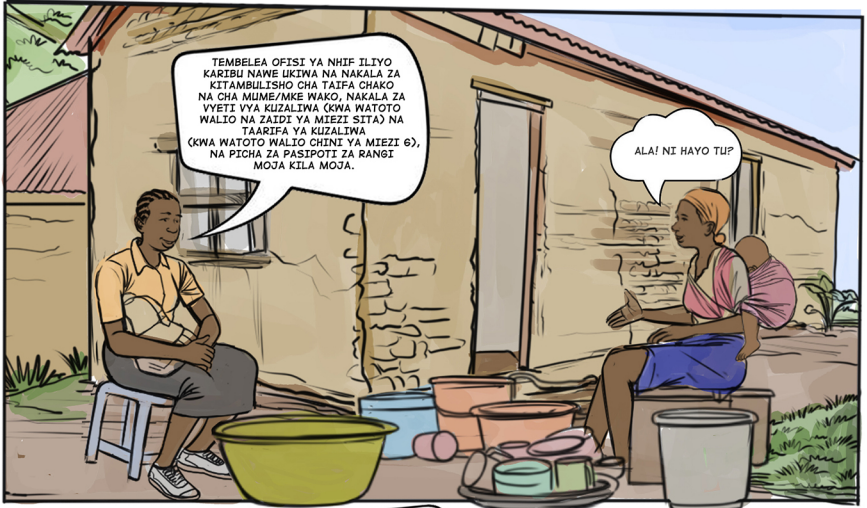


WEMA WA BIMA

African Population and
Health Research Center





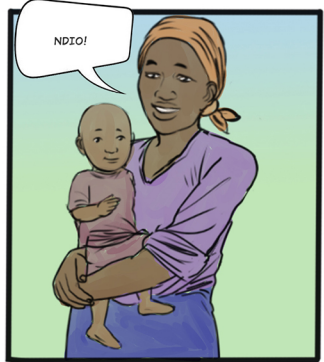


TEMBELEA OFISI YA NHIF ILIYO KARIBU NAME UKIWA NA NAKALA ZA KITAMBULISHO CHA TAIFA CHAKO NA CHA MUME/MKE WAKO, NAKALA ZA VYETI VYA KUZALIWA (KWA WATOTO WALIO NA ZAIDI YA MIEZI SITA) NA TAARIFA YA KUZALIWA (KWA WATOTO WALIO CHINI YA MIEZI 6), NA PICHA ZA PASIPOTI ZA RANGI MOJA KILA MOJA.

ALA! NI HAYO TUP?



NDIO. Naweza kukisajilia sio?

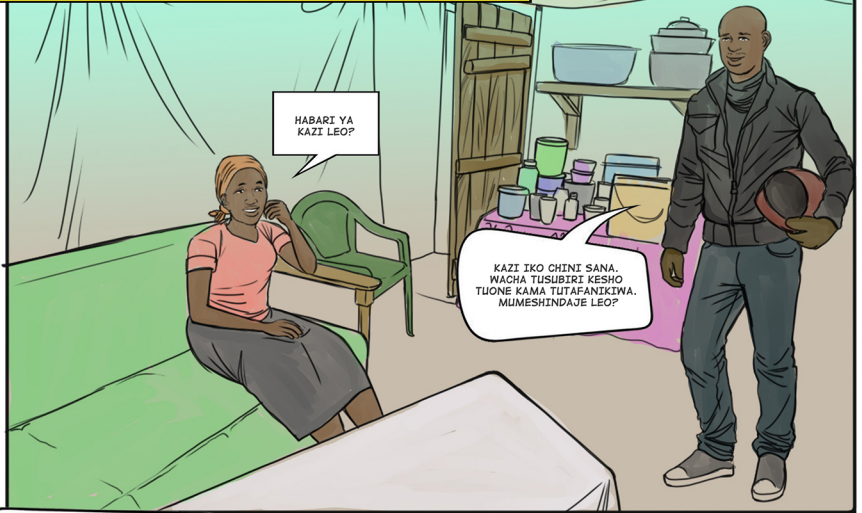


NDIO!



KWAHERI

JIONI YA SIKU HIYO, MUMEWE (BABA FATUMA) ARUDI NYUMBANI.



HABARI YA KAZI LEO?

KAZI IKO CHINI SANA. WACHA TUSUBIRI KESHO TUONE KAMA TUTAFANIKIWA. MUMESHINDAJE LEO?

LEO NIMETEMBELEWA NA CHV WORKER AMBAYE AMENSAJILI KWA NHIF. NILIONA ITAWEZA KUTUSAITIDA NA GHARAMA YA HOSPITALI IKIWA FATUMA ATA KUWA MGOJWA HASWA WAKATI HUU VILE GHARAMA YA MAISHA IMEPANDA.



ULITOA WAPI PESA YA KUJISAJILI?



MRADI YA I-PUSH ILIWEZA KUSIMAMIA MALIPO YA HUU MWAKA WA KWANZA



OOH SAWA

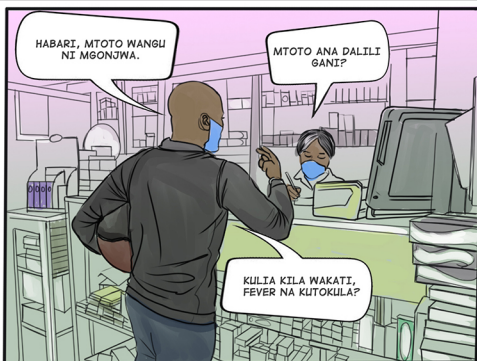
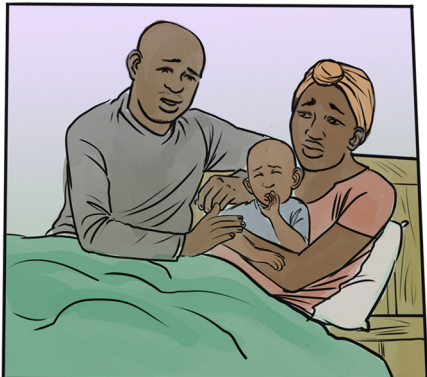
WIKI CHACHE BAADAYE:



WAAAAH...WAAAAH.

USIKU, FATUMA HAWEZI KULALA ANA KILIO CHA KUTOSKIA VIZURI.

KWA SABABU YA HOFU YA KWENDA HOSPITALI WAKATI WA COVID-19 NA NYAKATI NGUMU ZINAZOSABABISHWA NA JANGA, MUME ANAPENDELEA KWENDA KUCHUKUA DAWA KUTOKA KWA DUKA LA DAWA LILILO KARIBU.



HABARI, MTOTO WANGU NI MGONJWA.

MTOTO ANA DALILI GANI?

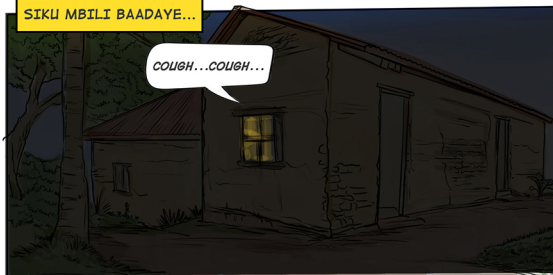
KULIA KILA WAKATI, FEVER NA KUTOKULA?

SIKU MBILI BAADAYE...

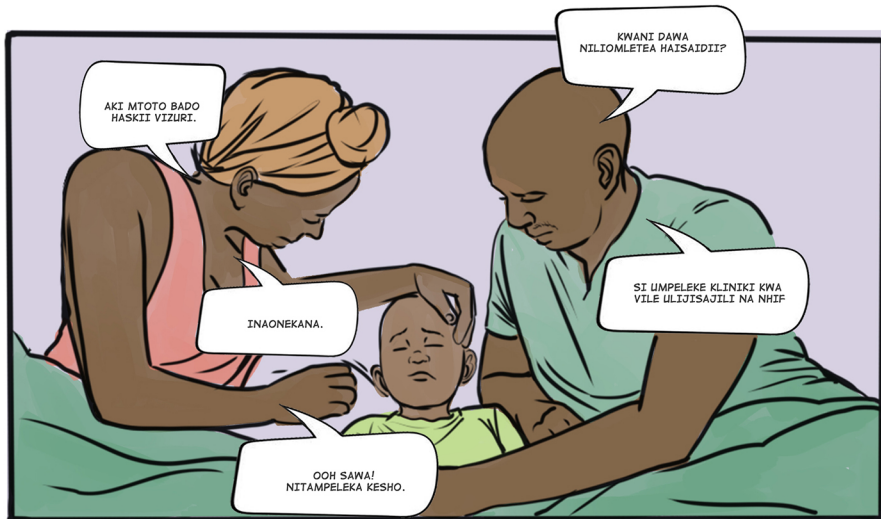


SAWA SAWA, MPATIE HIZI DAWA, MARA MBILI KILA SIKU.

SAWA, ASANTE!



COUGH...COUGH...



AKI MTOTO BADO HASKII VIZURI.

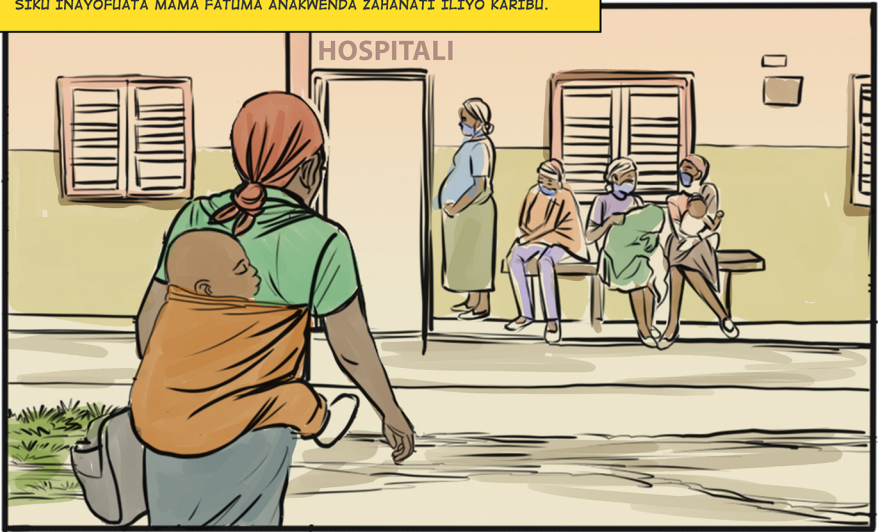
KWANI DAWA NILIOMLETEA HAISAIIDIPI

INAONEKANA.

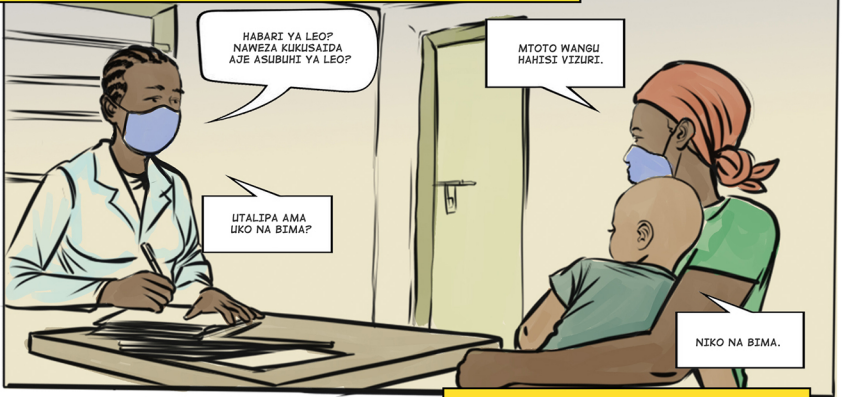
SI UMPELEKE KLINIKI KWA VILE ULIJISAJILI NA NHIF

OOH SAWA! NITAMPELEKA KESHO.

SIKIU INAYOFUATA MAMA FATUMA ANAKWENDA ZAHANATI ILIYO KARIBU.



MAMA FATUMA ANATOA MAELEZO YAKE. MHUDUMU ANAENDELEA KUMJUELEKEZA.



BAADAYE DAKTARI ANAWESA KUMCHUNGUZA MTOTO NA KU@IZA DAWA.



AKIWA NJIANI KUELEKA NYUMBANI, ANAKUTANA NA RAFIKI YAKE NA JIRANI YAKE.



USIKU HUO, MUME ANARUDI NYUMBANI NA KUMKUTA MTOTO AKIWA NA FURAHA NA ANANYONYESHA.

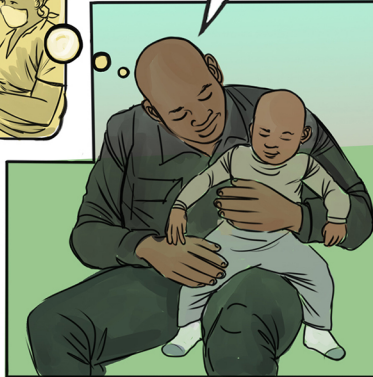


FATUMA ANAENDELEA AJE?

MTOTO WAKO HAWEZI
TIBIWA KAMA HUNA
PESA!

SAWA, BIMA YA NHIF IMEWEZA
KUTUSAIDIA SANA. NAFURAHIA KUONA
ULIWEZA KUJISAJILISHA KWA SABABU
TUNGEKUA TUMETATIZIKA KUTAFUTA PESA
YA KEUNDA KLINIKI/HOSPITALINI.

AMEANZA KUPATA NAFUU.



How To Pay NHIF Contributions Via MPESA

You can now make payments for monthly remittances before 9th of every month.

1. Go to the Mpesa menu and click on Lipa na Mpesa then select Pay Bill.
2. Enter 200222 as the NHIF Business Number.
3. Enter your National ID as the Account Number.
4. For a monthly payment, enter KES 500 or KES 6,000 to pay for the whole year.
5. Enter your PIN Number.
6. You will receive a message confirming that you have successfully paid.

*Safaricom Terms & Conditions Apply

LIPA NA MPESA



NHIF
SUPA-COVER

Research Partners



Implementing Partners



Funders

