



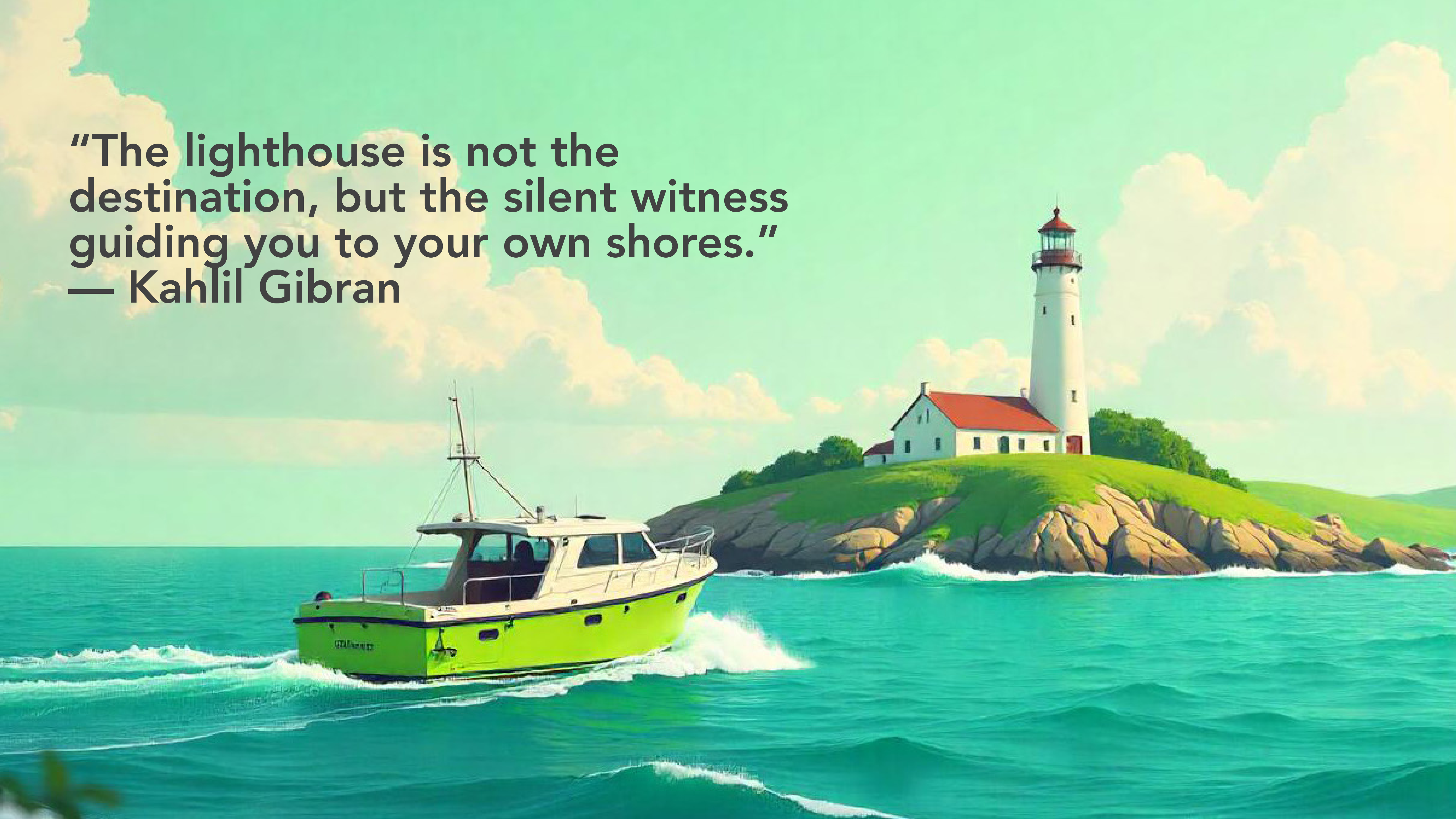
**African Population and
Health Research Center**

2024 Annual Report

Lighting the Way for Africa



**"The lighthouse is not the destination, but the silent witness guiding you to your own shores."
— Kahlil Gibran**



Contents

Introduction	4
Remarks by the Board Chair and the Executive Director	6
2024 in Numbers	8
Turning on the Lights	10
Illuminating the 360	16
The Lens	35
Financials	40
APHRC Funders and Partners	43





Introduction

The Center's 2024 Annual Report theme, '**Lighting the Way for Africa**,' envisions a lighthouse that emits an intense beam of light visible from afar, warning vessels of hazards like rocky coastlines, shallow reefs, or narrow harbor entries. In essence, a lighthouse is a guide; similarly, APHRC, a leader in African research and policy, is a guiding force that generates evidence, leads critical conversations influencing national, continental, and global agendas and has taken a leadership role in strengthening the Research and Development (R&D) ecosystem on the continent.

This theme explores how APHRC's leadership is guiding ecosystem change and is unpacked in three dimensions: turning on the lights, illuminating the 360, and looking through the lens. The Center, by turning on the lights, is breaking new ground in its research and capacity strengthening programs. APHRC's achievements are illuminated as we unveil hidden patterns and trends in health and other social outcomes and the drivers behind them. We then look through a lens - to showcase the other side of success: the systems that make APHRC tick.



Turning on the lights, the simple act of flipping a switch, can open a new journey of learning and discovery. It can be interpreted as positioning and repositioning oneself, breaking new ground and shifting to something significant, complementing ongoing efforts, and focusing attention.



Illuminating the 360, like a lighthouse casting its beam in all directions, the Center's policy and programmatic work comes alive. We scan the full spectrum of Africa's development challenges, in an all-encompassing approach, not only bringing vital issues to the forefront but also shedding light where it's most needed - on longstanding social and systemic challenges hindering the continent's progress in R&D.



The Lens looks at how the Center views its efficient and interconnected systems as the engine through which its mission comes into focus, driving synergy and sustainability.

There is so much more to share! Explore APHRC's 2024 journey of Lighting the Way for Africa and discover our milestones and achievements.

Remarks by the Board Chair and the Executive Director ►

APHRC continued on a strong trajectory in 2024 in leading evidence generation and use on the African continent and beyond.



**Bunmi Makinwa,
Board Chair**

The Center's staff and leadership shared global platforms with world leaders in conversations on global health research, including *the Global Science Summit, the Grand Challenges Annual Meeting*, which brings together major influencers in global health innovation; *the International Conference on Urban Health*; and *the UN General Assembly (UNGA)*. Furthermore, APHRC hosted its inaugural 'Africa Health and Development Annual Research Symposia (AHDARS),' aimed at creating awareness and greater understanding of emerging issues in the population, health, and development space. The event also served as a platform to showcase selected aspects of the Center's programmatic work in Research, Capacity Strengthening and Policy Engagement and Communications. The symposium facilitated deliberations that contributed to a greater understanding of the ecosystem issues that could affect the widespread adoption of Artificial Intelligence and other data science tools in Africa.



**Catherine Kyobutungi,
Executive Director**

In 2024, APHRC continued to boldly innovate by delivering 18 technological and policy solutions across its core thematic areas: Health and Wellbeing, Human Development, Population Dynamics and Urbanization, and Data Science. The innovations range from a curriculum for Agent-Based Modeling (ABM), an innovative approach to analyzing demographic transitions and migration patterns in urban slums, a digital vaccine card

and registry to monitor childhood vaccinations to the Data Science and Sharing (DASSA) platform developed to facilitate ethical data sharing and standardization. The DASSA platform has been developed through the integration of datasets and compliance with data governance frameworks. It will foster collaboration and support the growth of scientific research on the continent.

In addition, the Center established the Afrique Research Support Hub (ARSH), which aims to address a crucial gap in the capacity of early- and mid-career African researchers to attract research funding. This initiative seeks to equip participants with the necessary skills to secure grants and enhance their research capabilities, ultimately strengthening the continent's research ecosystem.

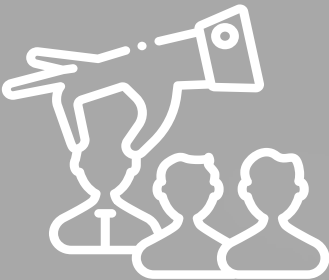
APHRC research findings and evidence directly contributed to 12 policy wins—instances where the Center's research, advocacy, or engagement has influenced or contributed to a change or decision in public policy, legislation, or government practices. The 2024 policy wins highlighted in this report cover multiple countries, reinforcing the Center's role as a trusted research partner in shaping national and subnational policy. These included contributions to national legislation such as the Safe Motherhood and Reproductive Health Bill and Public Health Bills in Sierra Leone and Liberia, respectively, both informed by APHRC's work on post-abortion complications. The Center's research also influenced the development of Kenya's National Nutrition Action Plan and the Nairobi Childcare Regulations, drawing the Kenya Senate's attention to gaps in care for pregnant adolescents.

Amidst a rapidly changing global political, social, economic, and environmental landscape, we remain focused on institutional resilience, continuous learning, and aligning our systems to drive evidence-informed change on the continent. The journey ahead is one of growth and societal impact.



We extend our gratitude to those who made our work in 2024 possible. To our funders—your trust and investment enabled us to pursue rigorous research and advocate for evidence-based solutions. To our collaborators and partners—your expertise and shared commitment enriched our efforts and broadened our impact. And to our dedicated staff—your intellectual rigor and persistence drove everything we achieved. Thank you for being an essential part of our journey.

2024 in Numbers

Our People

Staff Count	2023	2024
	233	313
New Hires		
	63	92
Internships		
	44	72

Financial Sustainability

Income Budget	2023	2024
	\$32m	\$38.1m
Fundraising		
	\$33.9m	\$50.01m



Products





Turning on the Lights

**“There is always light if only
we are brave enough to
see it, if only we are brave
enough to be it.”**

— Amanda Gorman





In 2024, APHRC continued to turn on the lights, generating evidence to inform policies and programmatic actions, and embracing innovation. The **Africa Research Connect (ARC)** stood out as the Center's most significant innovation in the past year. ARC is an Artificial Intelligence (AI)-powered platform that enhances visibility, discoverability, and accessibility to African-based researchers and resources. Using AI to collect up-to-date data, the ARC aims to transform how institutions, researchers, and funders connect and collaborate with African scientists. The ARC features over 6 million author profiles and more than 4 million publications spanning a 25-year period and from all 54 African countries. In the same year, the Center also launched the **African Journal Visibility Platform**—a flagship digital infrastructure to elevate the global visibility, accessibility, and indexing of African scholarly journals. This platform strengthens the African research ecosystem by ensuring that African-generated knowledge is discoverable, accessible, and citable globally.

APHRC also unveiled its newly licensed **Biodata Laboratory**, equipped with molecular and genomic research tools. The Biodata Lab is more than a physical space; it represents a shift in the Center's research approach, from a question-based approach to one that incorporates biological markers of disease and health in its scientific inquiry. The lab was licensed by the Kenya Medical Laboratory Technicians and Technologists Board (KMLTTB) and will advance research on chronic diseases and other health issues at the Center.





The Center recognizes that lasting change needs empowered individuals and strong institutions. We ensure our stakeholders' capacity is strengthened, knowledge is transferred, and skills are developed. Notably, 161 institutions underwent the **Good Financial Grant Practice (GFGP)** certification process, a significant increase from 67 in 2023. Of these, eight completed the GFGP certification, 30 completed self-assessments, while 123 are undergoing self-assessment. This initiative aims to enhance the financial and grant management capacity of African institutions. APHRC is turning on the light by providing expertise in research and capacity strengthening to deliver targeted interventions, guiding institutions through best grant management practices and compliance with the GFGP standard for stronger financial governance.

We have invested in mentorship, training, and leadership development, equipping young African scholars with the necessary tools to drive transformation. APHRC strengthened its **internship program** by recruiting 55 interns, surpassing the annual target of 12. During this reporting period, the APHRC **fellowship programs** expanded in scope and number, supporting 187 fellows, including 37 new fellows, marking an increase from the 2023 total of 138 fellows. These fellows published 100 research outputs and secured over \$2.9 million in research grants. The programs include the Consortium for Advanced Research Training in Africa (CARTA), the Joint Programming Initiative on Antimicrobial Resistance (JPIAMR), the African Doctoral Dissertation Research Fellowship (ADDRF), the Capacity Development of Applied Epidemiology (CDAE), Countdown 2030, the Africa Research Excellence Fund (AREF) Fellowship, and the WHO HRP Alliance Fellowship.





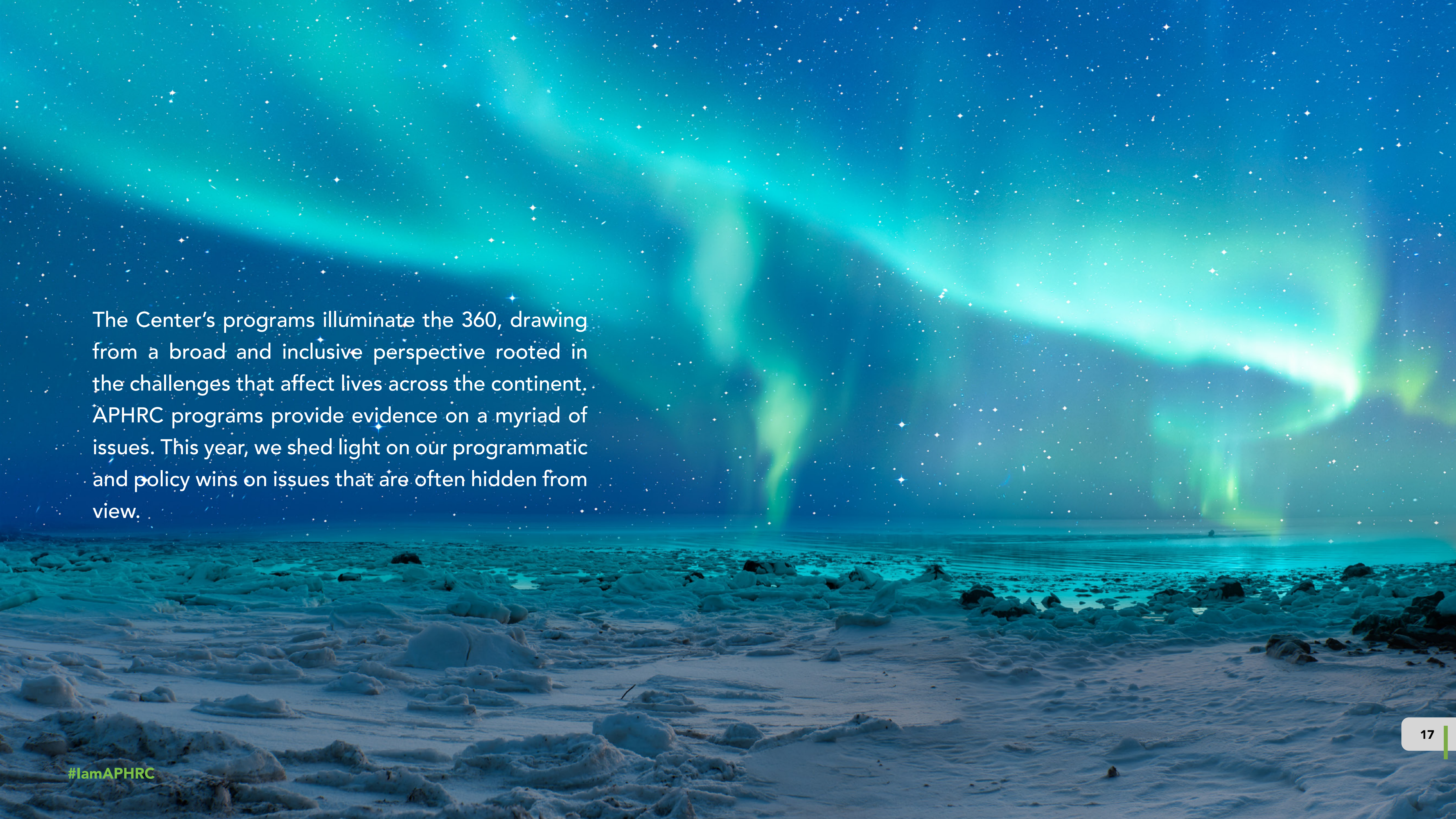
Furthermore, the Center marked a significant milestone by awarding the first **Pauline Bakibinga Memorial Scholarship**. Established in September 2022, the scholarship honors the memory of Dr. Pauline Bakibinga, a former research scientist at APHRC passionate about digital health and its potential to transform health systems on the African continent. The first scholarship award to Deborah Neumbe, a master's student in bioinformatics at Makerere University is a significant step toward realizing the vision of nurturing the next generation of digital health experts.

Illuminating the 360

“In the right light at the right time,
everything is extraordinary.”

—Aaron Rose



A full-page background image featuring a vibrant aurora borealis (northern lights) display in shades of green and blue against a starry night sky. The aurora's light reflects on a calm body of water in the middle ground. The foreground is a snowy, rocky landscape. The overall mood is serene and expansive.

The Center's programs illuminate the 360, drawing from a broad and inclusive perspective rooted in the challenges that affect lives across the continent. APHRC programs provide evidence on a myriad of issues. This year, we shed light on our programmatic and policy wins on issues that are often hidden from view.

Programmatic Wins





Protecting Children in Humanitarian Crises

The conflict in the Horn of Africa and Congo has displaced millions, leaving families in crisis and livelihoods lost. Children are most impacted by this instability, with heightened vulnerabilities in humanitarian settings. Recognizing the need for action, APHRC spearheaded the **Humanitarian Violence Against Children survey (HVACS)** in Uganda and Ethiopia, the first of its kind to be conducted on the continent.

The outcome of this survey will inform policy actions and drive multi-sectoral responses to protect children and youth, Africa's most valuable asset for future prosperity. Considering that African nations have limited resources to manage displaced populations, such evidence is essential in mobilizing concerted action from governments, civil society, and development partners to safeguard society's most vulnerable within dire situations.

Advancing Sexual and Reproductive Health Rights in Africa

APHRC's body of work in SRHR, especially on the incidence of abortion and severity of complications and the impact of unsafe abortions on communities, has continuously highlighted the devastating consequences of unstructured, unfunded, unappreciated, and unrecognized need for Abortion and Post-Abortion Care for women. The Center has continued to lead efforts to generate evidence on these issues and engage in policy discussions surrounding them. APHRC continues to utilize opportunities, such as regional, national, or local convenings with policy actors, including parliamentary health committees, ministries, and peer development institutions in the space, to position emerging

and existing SRHR evidence as a key ingredient for developing, implementing, and sustaining evidence-informed policy action.

To complement such efforts, APHRC, in collaboration with other like-minded institutions, established **the African Coalition for Research and Communication on Abortion (ACORCA)**. Through the collegiality of generating evidence and discussing policies, the coalition aims to shape strategic interventions towards enhancing access to safe abortion services, promoting reproductive rights, and ending the detrimental impact of unsafe termination of pregnancy on Africa's future generations.



A decorative graphic on the left side of the slide consisting of glowing blue and white circuit lines and nodes, resembling a digital or technological theme.

Enhancing Health Research With Data Innovation in Africa

The Center's **INSPIRE Network Datahub** informed policy actions to improve the governance and integration of health data systems, influencing national-level policies on data utilization and health information exchange in Kenya, Uganda, and Burkina Faso. By leveraging advanced technologies in data management, Health and Demographic Surveillance Sites (HDSS) in the three African countries are closing long-standing gaps in data standardization, ensuring that health and demographic data are available and comparable across different regions or localities.

The INSPIRE Network Datahub's impact extends beyond technology—it is rewriting the future of public health in Africa, where data becomes an opportunity that cannot be missed for policy-making, disease surveillance, and improved healthcare.

Strengthening Institutional Research Capacity

Following an APHRC assessment of the research readiness of over 500 African research institutes and universities in Kenya, Ethiopia, and Nigeria, the need for targeted capacity-strengthening interventions that align with global standards while amplifying local impact was identified. By the end of 2024, more than **500 research institutions and universities** across the continent had completed the Research Readiness Assessment (RRA), a tool developed by APHRC to evaluate and enhance institutional capacity for generating, managing, and using research. The RRA provides a baseline for identifying strengths and areas for development in research governance, data systems, and ethical compliance, contributing to a more sustainable and credible research ecosystem in Africa.



Policy Wins

Strengthening Consumer Choices with Nutrition Labeling

Leveraging its body of work on consumer consumption patterns, APHRC collaborated with the Ministry of Health in Kenya to promote healthy food and dietary transparency. It is one of the most visible programs at the Center, which aims to reformulate food to improve its nutrient status, thereby enabling the consumption of healthier alternatives. The Center championed the implementation of mandatory **Front-of-Pack Nutrition Labels (FOPLs)** on all pre-packed foods, and so far, there have been progressive discussions within the policy space on how to actualise this across relevant sectors. The contributions made by diverse stakeholders towards this push have driven broader considerations on the need to safeguard healthy food consumption in the region. Clear and concise labels will empower consumers with key health and dietary information, enabling them to make informed decisions that can help stem the tide of non-communicable diseases (NCDs) such as diabetes, obesity, and hypertension.



Strengthening Data Systems and Research to Inform Health Policy

Through collaborations with key players at national and subnational levels of various countries, APHRC continued to support data-driven decision-making and evidence-informed policy in Africa. The Catalyze Impact Initiative, working in partnership with Bayero University of Kano, the University of Lagos, and State Ministries of Health, **established sample registration systems** to collect community-level data on causes of maternal deaths and stillbirths in Kano and Lagos—Nigeria's two most populous states, with the highest cases of maternal mortality. The project aimed to improve data quality and enable targeted maternal health interventions, with a focus on channeling resources where they were most needed.

The Catalyze Impact Initiative also supported **policy prototyping** in Nigeria – Lagos and Kano States, in addition to the sample registration system, including a framework linking Research to Policy for Sustained Impact. The continuous engagement of policymakers in the co-creation and co-design of interventions, which included the adoption of the Target Policy Profile and Multi-Criteria decision analysis models, formed the foundation of this collaboration between Bayero University of Kano and the University of Lagos, as well as the respective state ministries of health. This engagement ensured that relevant data was collected and translated into actionable insights.



Strengthening Evidence Use in Education Policy

In enhancing the adoption and use of evidence for education policy, the Center's **Data Ecosystems for Development in Education (DECODE)** project, alongside education stakeholders on the continent, championed the need to use evidence in informing education policies and programmes. It encouraged the development of a system that uses evidence-informed, high-quality, research-led education policy and practice, resulting in improved learning outcomes across the continent. The work emphasized the importance of collaboration among key actors while also sparking deliberate discussions, especially among policymakers, on how evidence is a crucial factor in education transformation in Africa.



The background of the slide is a photograph of a yellow school bus driving on a dirt road through a hilly, informal settlement. The houses are small, closely packed, and built on a slope. The bus is yellow with 'SCHOOL BUS' written on the front and 'ISUZU' on the grille. The sky is a warm, orange-brown color.

Busing Bill for Marginalized Children

The Nairobi County Assembly in Kenya **approved a Busing Motion**, paving the way for the **drafting of a Busing Bill** to enhance access to education in the county. This was a significant step toward ensuring equity in education across Nairobi County. With the approval secured, a legislative proposal was moved to the drafting stage, and a presentation was to be made to the House Assembly for debate. This brings Nairobi closer to implementing strategies that enable children from poor urban neighborhoods to attend government schools. A team from the Human Development theme, supported by the revamped Policy Engagement and Communications team, provided evidence and a nudge for action. Working with key players in the education sector, they are now set to propel Nairobi County towards a future where every child can access high-quality education, regardless of their socio-economic background.

Advancing Childcare Regulations in Nairobi City County

The Early Childhood Development (ECD) Unit, alongside the Collaboration Action for Childcare's (CAC) Legal, Policy, and Regulatory Reforms Technical Working Group and the Nairobi City County Government, initiated the drafting of the Regulatory Impact Assessment (RIA) **Report for the County's Childcare Regulations**. The RIA report, along with input from other key stakeholders, formed part of the documentation presented to the Nairobi County Executive Committee as part of the process to operationalize the new childcare regulations. APHRC has been instrumental in revising the County's Childcare Facilities Act of 2017 and developing new regulations to enhance the safety and quality of childcare services.





Enhancing Reproductive Health Policies for Safe Motherhood

APHRC, through the Challenging the Politics of Social Exclusion (CPSE) program, has been conducting extensive research and advocacy in Liberia and Sierra Leone on access to safe abortion services. This has included engagements with civil society and policymakers to champion **the enactment of the Safe Motherhood and Reproductive Health Bill (Sierra Leone) and the Public Health Bill in Liberia**. Tabled in June 2024, the Safe Motherhood and Reproductive Health Bill, if passed, aims to enhance reproductive health care service delivery. In Liberia, the Public Health Bill is currently before the Senate and aims to strengthen health services across the country, improving overall healthcare delivery and broadly safeguarding sexual reproductive health rights (SRHR) and curbing substance abuse.

Nutrition at the Heart of Wellbeing

In 2024, APHRC continued to place nutrition at the center of public health and development discourse. In partnership with key stakeholders, the Center contributed to the development of the **Kenya National Nutrition Action Plan (NNAP)** and led the review of the **Laikipia County Nutrition Action Plan**. These efforts formed part of a broader strategy to support the formulation of a comprehensive **National Food and Nutrition Security Policy**, anchored in evidence. The Center's longstanding research on food systems, value chains, and community nutrition profiles played a pivotal role in identifying policy gaps and proposing actionable solutions for improved nutrition outcomes, particularly among vulnerable populations.



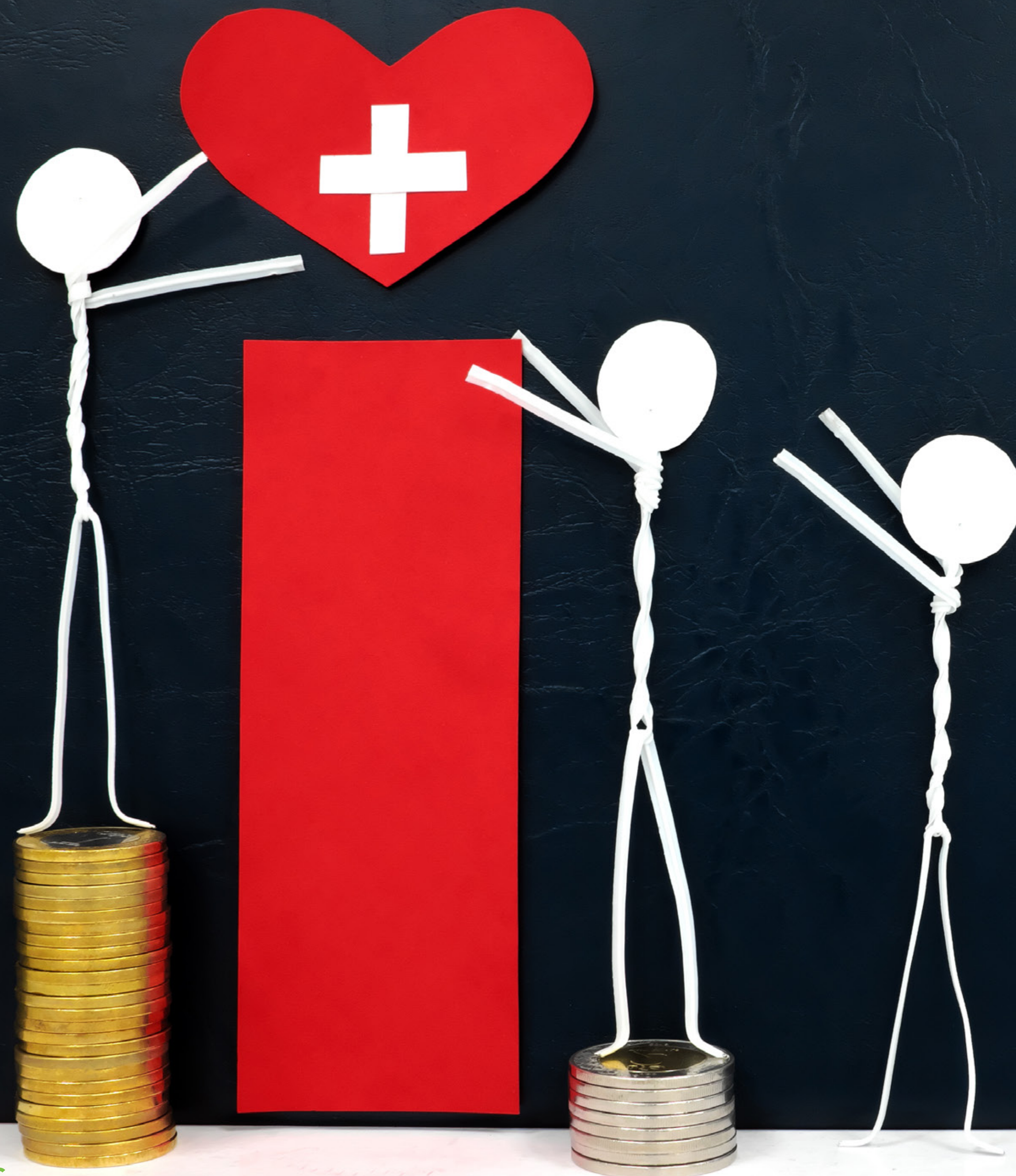


Advocating for Adolescents' Health

In a significant milestone for adolescent sexual and reproductive health advocacy, the **Senate of Kenya** formally requested a response from the Ministry of Health on the quality and accessibility of health services for pregnant adolescents. This request was directly informed by evidence generated by APHRC, demonstrating the impact of the Center's research in elevating critical issues affecting young people to the national policy agenda.

Shaping the Discourse on Sanitation

APHRC played a key role in shaping Kenya's sanitation policy landscape. In **December 2024, Sessional Paper No. 7 on the Kenya National Sanitation Policy** was submitted to the Clerk of the National Assembly, marking a historic step toward integrated and inclusive sanitation governance. The policy provides a rights-based and gender-sensitive framework for sanitation management, aligning with Kenya's commitments under national development plans and global targets, including the Sustainable Development Goals (SDGs).



Toward a Gender-Responsive Health Policy

The Center's research under the **Gender-Responsive Health Policy (GRHP)** initiative made a substantive contribution to the design and implementation of health policies that address gender disparities across disease-specific areas. By generating disaggregated evidence and engaging directly with policymakers at the Ministry of Health, APHRC supported more equitable and responsive decision-making processes, reinforcing Kenya's ambition to build a health system that leaves no one behind.

Sitting at the Policy Table


In 2024, **APHRC experts** exemplified excellence in service to the research community. Several APHRC staff members received prestigious awards and appointments, recognizing their outstanding contributions to science, policy, and advocacy. The appointments included staff being a part of the WHO Strategic and Technical Advisory Group for Maternal, Newborn, Child and Adolescent Health and Nutrition (STAGE) and the WHO Technical Advisory Group on Behavioral Sciences for Better Health. These accolades highlight APHRC's leadership in advancing evidence-based solutions for Africa's most pressing challenges. From global advisory roles to national honors, our team continues to shape the research landscape.

The Lens

*“When you change the way you look at things, the things you look at change.”
— Wayne Dyer*



Success can be looked at through a lens that examines the products and achievements. It can also be looked at through a lens that appreciates the systems and processes that produce the achievements. APHRC continued to refine its internal systems to ensure adaptability in a dynamic ecosystem. In 2024, the Center undertook a series of strategic initiatives to strengthen governance, optimize operations, and reinforce institutional capacity.



The Center conducted a **Mid-Term Evaluation** of the 2022-2026 Strategic Plan, a critical reflection point to assess progress, recalibrate priorities, and refocus on our strategic direction. The exercise demonstrated good progress in many areas, indicating that our strategy remains relevant in a rapidly changing environment. It also unearthed some gaps, especially in our data capture systems. This will be a priority in the coming years.



Equity remains a cornerstone of our organizational ethos. We conducted our first-ever **gender pay gap analysis**. This was conducted with data drawn from (2021-2023) monthly salaries for all salary grades for both internationally recruited (IRP) and nationally recruited positions (NRP). It confirmed that APHRC upholds pay parity across NRP and IRP staff categories, reinforcing our commitment to fairness and inclusivity in our workforce. The analysis showed that APHRC's position is close to parity in pay, with no more than 5% differences in the few job grades where a disparity was observed.

Through a targeted **leadership development program**, several leaders across the Center had an opportunity to sharpen and hone their skills. Five Managers completed training at Strathmore Business School, 15 completed training at The Lead Consortium (TLC), and 24 completed training by the Center for Creative Leadership (CCL).

Financials



Income

Income vs Expenditure

Category	2024	2023	Increase/decrease in %
Income	39,510,486	31,623,468	25%
Expenditure	39,146,612	30,533,350	28%

Income Breakdown

Category	Restricted	Unrestricted	2024	2023
Grant Income	31,170,743	5,224,027	36,394,770	28,588,314
Ulwazi Place and Other Income	-	1,611,104	1,611,104	1,530,542
Total	31,170,743	6,835,131	38,005,874	30,118,856

Uses of Funds

Expenditure Breakdown

Sources of expenditure	Restricted	Unrestricted	2024	2023
Direct Program Expenses	31,170,743	2,361,350	33,532,093	25,860,384
Administration Ulwazi Place and Support	-	5,614,519	5,614,519	4,672,966
Total	31,170,743	7,975,869	39,146,612	30,533,350

Surplus

Category	Restricted	Unrestricted	2024	2023
Net Operating Income	-	-1,140,738	-1,140,738	-414,494
Finance Income	-	1,504,612	1,504,612	1,461,979
Surplus for the Year	-	363,874	363,874	1,047,485

Other Comprehensive Income, Net of Tax	Restricted	Unrestricted	2024	2023
Total Comprehensive Income	0	363,874	363,874	1,047,485

Total Assets

Current Assets

Current Assets	2024	2023
Debtors and Deposits	4,569,703	2,733,234
Grants Receivable	4,298,701	3,417,896
Short Term Investments	5,603,821	10,639,585
Cash and Cash Equivalents	32,628,774	27,453,548
Total Current Assets	47,100,999	44,244,263

Non-Current Assets

Non-Current Assets	2024	2023
Property and Equipment	12,447,876	12,651,238
Intangible Assets	-	-
Total Non-Current Assets	12,447,876	12,651,238

Category	2024	2023
Total Assets	59,548,875	56,895,501

Fund Balances and Liabilities

Current Liabilities	2024	2023
Deferred Grants	22,966,499	20,944,557
Creditors and Accruals	1,723,494	1,455,936
Total Current Liabilities	24,689,993	22,400,493

Category	2024	2023
Fund Balances	34,858,882	34,495,008
Total Fund Balance and Liabilities	59,548,875	56,895,501



APHRC Funders and Partners

To our partners and funders, we extend our gratitude for your unwavering support and commitment throughout the year. Your generosity, collaboration, and shared vision have been instrumental in enabling us to deliver impactful programs across Africa. Thank you!



40+

Funders



240+

Partners

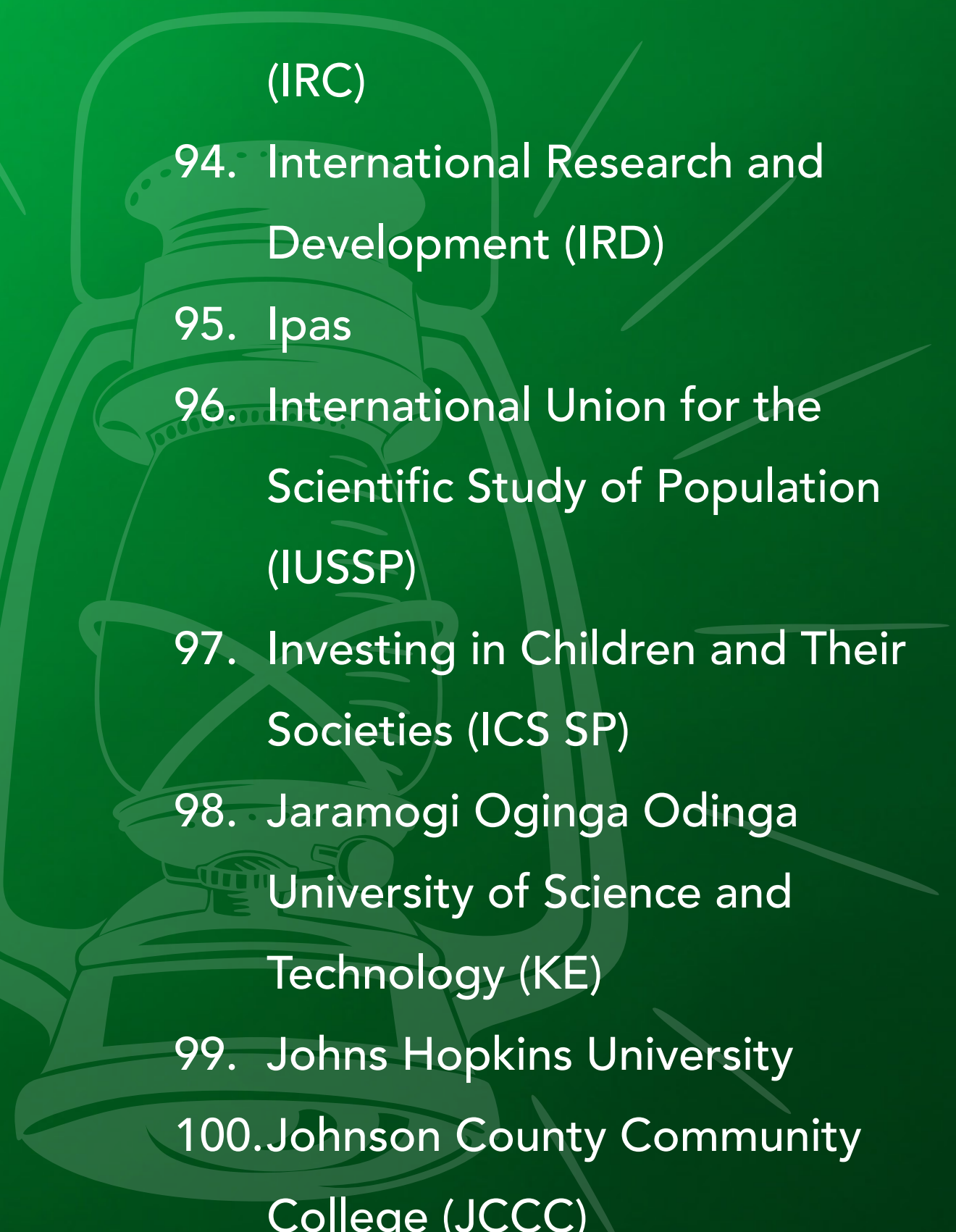
Funders

- 
1. The British Academy
 2. Carnegie Corporation of New York
 3. Children's Investment Fund Foundation
 4. Conrad Hilton Foundation
 5. Danish International Development Agency
 6. The David and Lucile Packard Foundation
 7. Echidna Giving
 8. Enhancing Learning and Research for Humanitarian Assistance (ELRHA)
 9. European & Developing Countries Clinical Trials Partnership (EDCTP)
 10. European Commission
 11. Foreign, Commonwealth and Development Office (FCDO)
 12. The Gates Foundation
 13. GAVI, the Vaccine Alliance
 14. German Federal Ministry of Education and Research
 15. Grand Challenges Canada
 16. Imaginable Futures
 17. International Development Research Centre (IDRC)
 18. Italian Agency for Development Cooperation
 19. LEGO Foundation
 20. MacArthur Foundation
 21. MasterCard Foundation
 22. Medical Research Foundation (MRF)
 23. Meridian Institute
 24. Medicines for Malaria Venture (MMV)
 25. New Venture Fund
 26. National Institutes of Health (NIH)
 27. National Institute for Health Research (NIHR)
 28. Norwegian Agency for Development Cooperation (NORAD)
 29. Novo Nordisk Foundation
 30. Oak Foundation
 31. Open Society Foundation
 32. Reckitt Global Hygiene Institute (RGHI)
 33. Rockefeller Foundation
 34. Science for Africa Foundation
 35. Swedish International Development Cooperation Agency (SIDA)
 36. UKAID FSD Africa
 37. UKRI-MRC
 38. Uppsala Monitoring Centre (UMC)
 39. USAID
 40. Wellcome
 41. Wellspring Philanthropic Fund
 42. The Willam and Flora Hewlett Foundation
 43. The World Bank

Partners

- | | | | |
|--|--|---|---|
| 1. African Early Childhood Network (AfECN) | 11. Alan Turing Institute | graph network) | 31. Clinical Research Unit of Nanoro (Burkina Faso) |
| 2. African Renaissance | 12. Alliance for Women's Development (AWOD) | 20. Beulah Self Help Group | 32. Clinton Health Access Initiative |
| 3. African Institute for Mathematical Sciences | 13. Amazon Theatrix Ensemble | 21. Beyond Initiative for Social Concern (BISC) | 33. Columbia University |
| 4. African Union Development Agency (AUDA-NEPAD) | 14. AMC Medical Research B.V on behalf of the ACADEMIC MEDICAL CENTRE | 22. Brac Institute of Governance and Development (BIGD) | 34. Committee on Data of the International Science Council (CODATA) |
| 5. African Research and Impact Network | 15. Amref International University | 23. Beyond Initiative for Social Concern (BISC) | 35. Committee of Vice Chancellors of Nigerian Universities |
| 6. African Research Universities Alliance (ARUA) | 16. Amsterdam Institute For Global Health & Development | 24. Brown University | 36. Community Empowerment and Media Initiative (CEMI-K) |
| 7. Africhild Centre | 17. APIN Public Health Initiatives LTD/Gte | 25. Center for Global Development | 37. Community Voices Network |
| 8. Aga Khan University Graduate School of Media and Communications | 18. Armauer Hansen Research Institute | 26. Centre for Social Research University of Malawi | 38. Child Space Kenya |
| 9. Agence Nationale de la Recherche (ANR) | 19. Association De Soutien Aux Centres De Recherche, Enseignement Et Soins En Milieux À Ressources Réduites (representing the interests of the | 27. Center for Health, Human Rights and Development (CEHURD) | 39. Christian Brothers Ruben Centre |
| 10. Agency for Research and Development Initiative | | 28. Centre Suisse de Recherches Scientifiques (CSRS) | 40. Christian Best Camps of Kenya |
| | | 29. City Shamba | 41. D2A Consulting LTD |
| | | 30. City of Kisumu Urban Areas Association (CKUAA) | 42. Development Gateway |
| | | | 43. Development Initiatives |
| | | | 44. Douala General Hospital |

- 
45. Ducit Blue Solutions Limited (DBS)
 46. Drexel University
 47. East African Community
 48. East Central and Southern Africa Health Community (ECSA-HS)
 49. École Nationale d'Ingénieurs – Abderhamane Baba Touré (ENI-ABT)
 50. Economics and HIV/AIDS Research Division
 51. Eden University (Zambia)
 52. Education Sub Saharan Africa (ESSA)
 53. Eduardo Mondlane University (Mozambique)
 54. Egyptian Center for Innovation and Technology Development (ECITD)
 55. ENDA Santé
 56. En Compass LLC
 57. European Clinical Research Infrastructure Network (ECRIN)
 58. École Supérieure d'Economie Appliquée
 59. Forum for African Women Educationalists - Senegal
 60. George Washington University
 61. Ghana School of Public Health
 62. Global Health Lab
 63. Gulu University
 64. Guttmacher Institute
 65. Health Development Initiative- Rwanda
 66. Household of Love Centre (HOLC)
 67. HISP Uganda
 68. Hudson Sandler
 69. Hummingbird Grassroots Centre
 70. Digital Health & AI Research Collaborative (I-DAIR /IHEID)
 71. ICF Macro, Inc
 72. IDInsight
 73. Ifakara Health Institute
 74. IMPERIAL COLLEGE OF SCIENCE, TECHNOLOGY AND MEDICINE
 75. Indepth Network
 76. Innovation for Poverty Action
 77. Institut de Recherche en Sciences de la Santé
 78. Institut de Santé et Développement
 79. Institut Médical Evangélique (IME) de Kimpese (DRC)
 80. Institut National de la Santé et de la Recherche Médicale (INSERM)
 81. Institut National de la Statistique (INS-Niger)
 82. Institut National de Santé Publique (National Institute of Public Health)
 83. Institut Supérieur des Sciences de la Population
 84. Institute for Population Studies (IPS)
 85. Institute of Empirical Research in the Political Economy
 86. Institute of Tropical Medicine (ITM) Antwerp
 87. Instituto De Salud Carlos Iii (ISCIII)
 88. International Center For Research in Agroforestry (ICRAF)
 89. International Centre of Insect Physiology and Ecology (icipe)
 90. International Day of the African Child and Youth (IDAY) Network
 91. International Food Policy Research Institute
 92. International Livestock Research Institute (Kenya and Senegal)
 93. International Rescue Committee



- (IRC)
94. International Research and Development (IRD)
95. Ipas
96. International Union for the Scientific Study of Population (IUSSP)
97. Investing in Children and Their Societies (ICS SP)
98. Jaramogi Oginga Odinga University of Science and Technology (KE)
99. Johns Hopkins University
100. Johnson County Community College (JCCC)
101. Kamuzu University of Health Sciences (Malawi)
102. Kagando Hospital
103. The Kenya Legal and Ethical Issues Network on HIV and AIDS (KELIN)

104. Kenya Medical Research Institute (KEMRI)
105. Kenya Medical Training College
106. Kenya National Examination Council of Kenya (KNEC)
107. Kenya Institute for Public Policy Research and Analysis (KIPPRA)
108. KEMRI Wellcome Trust Program
109. Kenya National Hospital
110. Kenyatta University Teaching Referral and Research Hospital
111. Kidogo
112. Kinshasa School of Public Health (KSPH)
113. Kisumu Young Agriprenuers (KIYA)
114. Kisumu City Poultry Enterprenuer Ventures Community Based Organization
115. KOCH FM
116. KOMB GREEN SOLUTIONS
117. Laboratoire National de l'Elevage

- et de Recherches Vétérinaires (LNERV) (Senegal)
118. Light University of Bujumbura
119. Liverpool School of Tropical Medicine (LSTM)
120. London School of Hygiene and Tropical Medicine (LSHTM)
121. Loughborough University
122. Lund University
123. Makadara Community Based Organization
124. Makerere University
125. Makerere Centre for Health and Population Research
126. Makerere University School of Public Health
127. Makerere AI Lab
128. Malawi Epidemiology and Intervention Research Unit (MEIRU)
129. Masinde Muliro University of Science and Technology

130. Mathare Foundation Youth Group
131. Mbarara University of Science and Technology
132. Meridian Institute
133. Meru University of Science and Technology
134. Ministero Della Salute – (Italy Ministry of Health)
135. Miss Koch Kenya
136. Moi University
137. MRC/Wits Rural Public Health and Health Transitions Unit (Agincourt)
138. Mwengeny Lifestyle CBO
139. National Commission for Science, Technology and Innovation- Kenya
140. National Council for Population and Development (NCPD)
141. National Council of Churches of

Kenya (NCCK)	Use Management (PELUM)	167.Reproductive and Maternal Health Consortium (RMHCK)	179.Statistics Sierra Leone
142.National Institute for Medical Research	Association-Kenya	168.RTI International	180.Stellenbosch University
143.Nairobi City Water and Sewage Company	155.People's Health Movement - Kenya	169.Rutgers	181.Tetra Tech Technologies
144.Nazi Boni University (Burkina Faso)	156.Planned Parenthood Global	170.Save the Children	182.The MRC Unit The Gambia at the London School of Hygiene & Tropical Medicine
145.New York University	157.Policy Cures Research	171.Sciensano	183.The British Redcross Society
146.Non-Communicable Diseases Alliance of Kenya (NCDAK)	158.Population Council	172.Science for Africa Foundation	184.The University of Dodoma
147.Novo Nordisk Foundation	159.PRICELESS	173.Sociedad Para El Fomento de la Innovación Tecnológica SI (INNOVATEC)	185.Technical University of Berlin
148.North-West University Busara Center for Behavioural Economics	160.The Precise Consultants	174.South African Medical Research Council (SA-MRC)	186.The Technical University of Kenya
149.Obafemi Awolowo University	161.Raising Voices	175.South African Population Research Infrastructure Network (SAPRIN)	187.The Institute of Medicine at the Sahlgrenska Academy, University of Gothenburg
150.Options	162.Regional Consortium for Research on the Generational Economy (CREG)	176.Southern African Research and Innovation Management Association	188.The Regional Psychosocial Support Initiatives
151.Oxfam-Ibis	163.Regional Psychosocial Support Initiative	177.Southern Hemisphere	189.TMG Research
152.Oxford Policy Management (OPM)	164.The Regents of the University of California, San Francisco	178.Slums Information Development and Resource centre	190.(TMCg)/ Rocket Health Africa
153.OSPO NOW Ltd	165.Research and Communications Services Limited (RCS)		191.Tom Mboya University
154.Participatory Ecological Land	166.Resources Oriented Development Initiative		192.Tony Blair Institute (TBI)
			193.Ubunifu Arts Centre Community Based Organisation

- 
- | | | |
|--|---|---|
| 194.U-Tena | 212.University of Ghana | 230.University of Zambia |
| 195.Uganda Martyrs University | 213.University of Ibadan | 231.Villgro |
| 196.Uganda Schistosomiasis
Multidisciplinary Research | 214.University of IOWA | 232.Viwandani Comprehensive
Community organization (VICCO) |
| 197.UN Women | 215.University of Kwazulu-Natal | 233.Wasafiri Consulting Ltd Kenya |
| 198.UNDP | 216.University of Liberia | 234.Water Aid (WA) |
| 199.UNFPA | 217.University of Lome | 235.Water Aid Mozambique |
| 200.UNICEF | 218.University of Malawi | 236.Water and Environmental
Sanitation Network (WESNET) |
| 201.University of Amsterdam | 219.University of Manitoba | 237.Water Services Providers
Association |
| 202.University College London | 220.University of Michigan | 238.West African Civil Society Forum
(WACSOF) |
| 203.University Court of the University
of Glasgow | 221.University of Nairobi | 239.WHO |
| 204.University Medical Center
Utrecht | 222.University of North Carolina | 240.Wits Health Consortium |
| 205.University of Bristol | 223.University of Oxford | 241.Women in Water and Sanitation
Association |
| 206.University of California Berkeley | 224.University of Queensland | 242.Yemaachi Biotech Limited |
| 207.University of Cape Town | 225.University of Rwanda | |
| 208.University of Copenhagen | 226.University of Southern California
(USC institute on inequalities on
Global Health KECK School of
Medicine) | |
| 209.University of Edinburgh | 227.University of the Western Cape | |
| 210.University of Embu (UoEM) | 228.University of the Witwatersrand | |
| 211.University of Geneva (UNIGE) | 229.University of Twente | |



African Population and Health Research Center
Headquarters, Kenya
Kitisuru, Manga Close, Kirawa road
Nairobi, Kenya



+254 722 205 933, +254 733 410 102



P.O. Box 10787-00100



info@aphrc.org



www.aphrc.org



West Africa Regional Office (WARO), Senegal
4e étage, Immeuble Sourok 3, 10083 Sacré
coeur 3 VDN
Dakar, Senegal



+221 33 867 99 36



infowestafrica@aphrc.org



www.aphrc.org



@aphrc